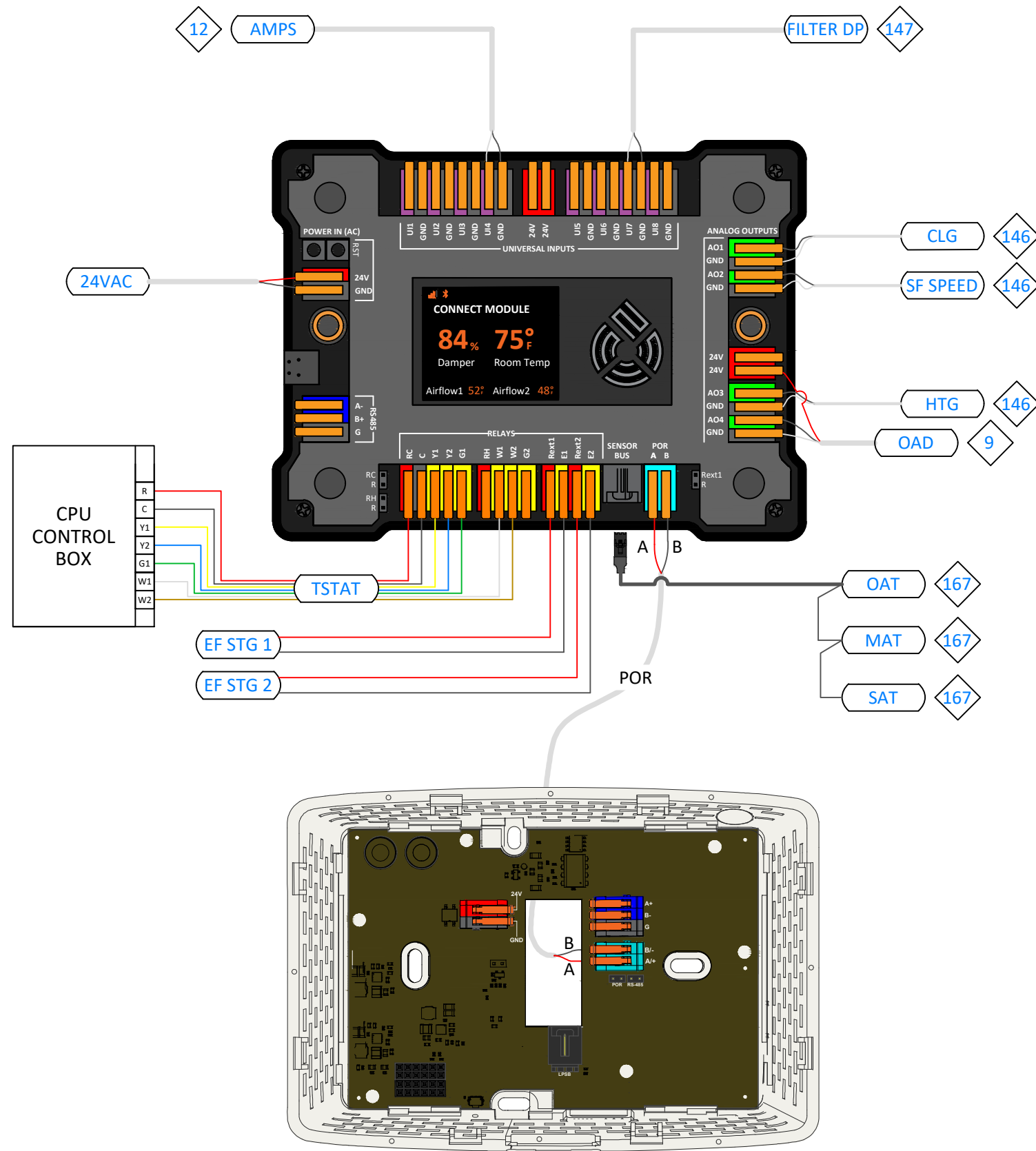


5.1 - LOGICAL DIAGRAM



5.2 - SEQUENCE OF OPERATION AND CONFIGURATION

HYPERSTAT SPLIT - CONNECT MODULE					
DESCRIPTION	POINT	TAG	DEVICE RANGE	MFG	PART #
SPARE	UI1	SAT	10K TYPE II / 0-10V / 4-20mA	-	
SPARE	UI2	MAT	10K TYPE II / 0-10V / 4-20mA	-	
SPARE	UI3	OAT	10K TYPE II / 0-10V / 4-20mA	-	
CURRENT TX (0-50A)	UI4	AMPS	0-10V = 0-50 AMPS	75F	3X-HW-C54X-X
24VAC R (FOR UI)	R	24V	24VAC	-	
24VAC R (FOR UI)	R	24V	24VAC	-	
SPARE	UI5		10K TYPE II / 0-10V / 4-20mA	-	
SPARE	UI6		10K TYPE II / 0-10V / 4-20mA	-	
FILTER DP	UI7	DP SWITCH	10K TYPE II / 0-10V / 4-20mA	-	3X-SE-C69X-X
SPARE	UI8		10K TYPE II / 0-10V / 4-20mA	-	
COOLING	AO1	MOD CLG	0-10VDC / 4-20mA		
LINEAR FAN SPEED	AO2	SF SPEED	0-10VDC / 4-20mA		
24VAC R (FOR AO)	R	24V	24VAC	-	
24VAC R (FOR AO)	R	24V	24VAC	-	
HEATING	AO3	MOD HTG	0-10VDC / 4-20mA		
OUTSIDE AIR DAMPERS	AO4	OAO	0-10VDC = 0-100% OPEN	-	3X-AT-C3X-X
COOLING STAGE 1	BO1 (Y1)	TSTAT	CC = ENABLE	-	
COOLING STAGE 2	BO2 (Y2)	TSTAT	CC = ENABLE	-	
SUPPLY FAN	BO3 (G)	TSTAT	CC = ENABLE	-	
HEATING STAGE 1	BO4 (W1)	TSTAT	CC = ENABLE	-	
HEATING STAGE 2	BO5 (W2)	TSTAT	CC = ENABLE	-	
SPARE	BO6 (G2)		WET CONTACT	-	
EXHAUST FAN STAGE 1	BO7 (E1)	TSTAT	CC = ENABLE	-	
EXHAUST FAN STAGE 2	BO8 (E2)	TSTAT	CC = ENABLE	-	
POWER IN	RC	24V	24VAC (FROM UNIT)	-	
OAT + SAT + MAT	RTS		3-PIN CABLE (NO LOCAL INTERFACE)		
ROOM TEMP, RH, OCC'S, LIGHT, SOUND, VOC, CO2, & INTERFACE	HL	POR	2-WIRE POWER & COMM.	75F	
SPARE	OW1	OW1	ONE WIRE INTERFACE (OWI)		
SPARE	RS485	RS485	RS485		

HYPERSTAT SPLIT - HYPERLITE					
DESCRIPTION	POINT	TAG	DEVICE RANGE	MFG	PART #
UNUSED	R	24V	24VAC		
HYPERLITE	HL	POR	2-WIRE POWER & COMM.	75F	7X-HS-C13W-X
SPARE	RS485	RS485	RS485		
SPARE		RTH	3-PIN CABLE (NO LOCAL INTERFACE)		

Drawing Notes:

- ①
- ②
- ③



Project Name: 75F Design Master Rev 1.4

Project Address:

DB: CB: Page: of

Drawing: HYPERSTAT SPLIT- CPU & ECONOMIZER (PHYSICAL)